

# WELEAD INDUSTRIAL LIMITED

Concrete Anchoring & Fastening System Specialist

## Welead Industrial Limited

Professional Anchor Manufacturer



Plant Add: G. 2 Cell 3, S318 Rd., D. Town Industry Park, YongNian. Dist., Handan, Heibei, China

Office Add: R. 1502, F. 15, BLDG. 2, Y. No. 9, Canal P. Rd., Tongzhou Dist., Beijing, 101100, China



+86 18618496895



weleadexp@gmail.com



www.anchorsmfg.com

[www.anchorsmfg.com](http://www.anchorsmfg.com)





## About Us

Welead Industrial Limited has been a professional and leading manufacturer and exporter in China for 20 years.

Our Products range: Concrete Anchoring System (Metal Anchors such as Drop-In Anchors, Wedge Anchor Throughbolts, Sleeve Anchors Heavy Duty Shield Anchors, Nylon Frame / Hammer Anchors), (DIN / AMTS / BSW Standard Fasteners / 4.8 / 5.8 / 6.8 / 8.8 Grade).

All our products are produced under very strictly quality control. Cold-Forging, Punching, Threading Lines in each production procedure are for high quality control, strictly trained & hardworking manufacturing & assembling staff.

All the staff of WELEAD sincerely thank you so much for your deep trust and inquiry to us. Sincerely hope to be one of your long time suppliers. We welcome your calls, feedback and look forward to answer any question you might have.



### Stringent Quality Control

We implement rigorous quality control throughout manufacturing process to ensure that every product meets the highest industry standards to provide reliable and durable solutions for your needs.

### Timely Delivery

We value your project timelines. With our efficient production processes and well-established supply chain, we ensure prompt delivery of your orders, helping you meet your project deadlines.

### Uncompromising Quality

Our anchor fasteners undergo stringent quality control measures, ensuring exceptional strength, durability, and performance for your construction projects.

### Competitive Pricing

We offer competitive pricing without compromising on quality. Benefit from our cost-effective anchor fasteners allowing you to maximize your project budget and achieve long-term cost savings.

### Industry Expertise

With years of experience in the fastening industry, we bring deep expertise and knowledge to every project. Trust our team to provide expert advice, innovative solutions, and valuable insights to help you achieve optimal results.

### Dedicated Customer Support

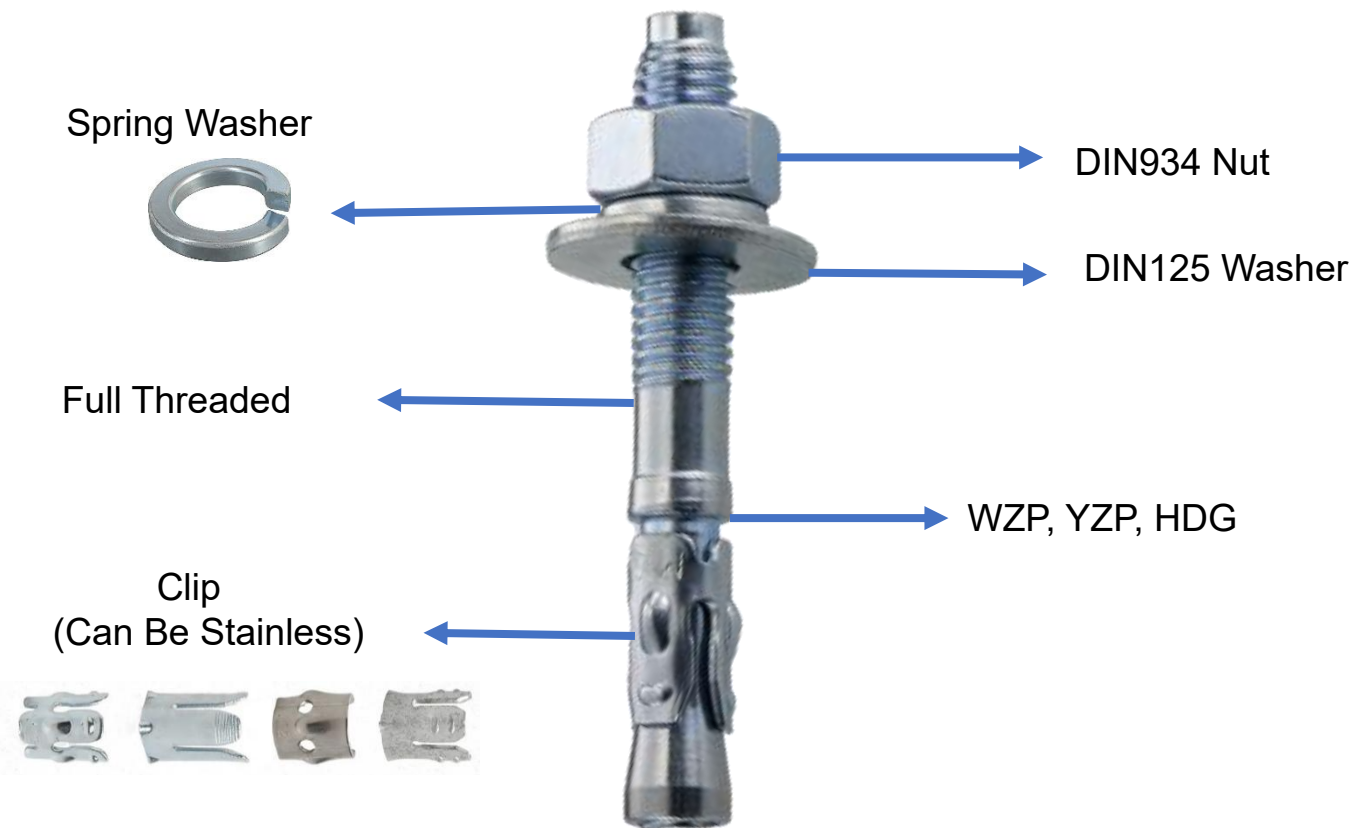
We prioritize customer satisfaction. Our knowledgeable support team is committed to providing exceptional assistance, technical guidance, prompt responses to your inquiries.



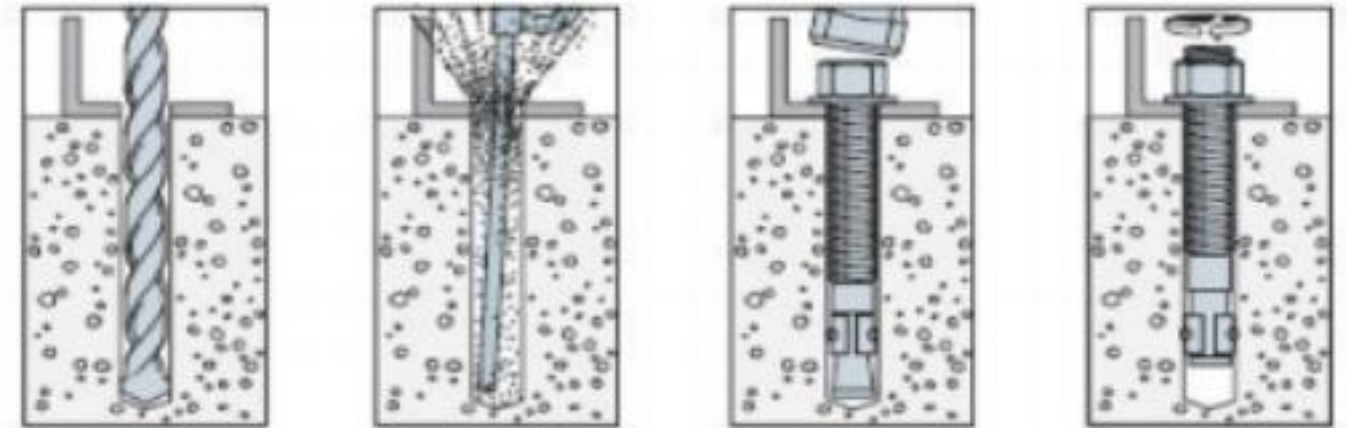
# Wedge Anchor



Wedge Anchor known as Wedge Bolt, Thru Bolt and Trubolt feature a Stainless Steel or Carbon Steel Clip, threaded body, DIN934 Nut and DIN125 Washer. Bodies are made of plated carbon steel, hot-dipped galvanized carbon steel, type 304 or 316 stainless steel also can be offered.



## Wedge Anchor Installation Sequence



## Typical Application

1. Strong Load Capacity: It offers excellent load-bearing capacity in concrete and masonry work, ensuring reliable support for heavy-duty structures.
2. Easy Installation: These anchors are designed for quick and hassle-free installation, saving time and effort for contractors.
3. Secure and Permanent Fastening: Once installed, it will create a strong and permanent connection, resisting vibration, shear forces, and pull-out.

# Drop in Anchor



Drop-In Anchor is a concrete anchor with internal threads used for solid concrete. Install the anchor in a pre-drilled hole in the concrete, then with a setting tool, the anchor is expanded in the hole in the concrete, and they only be used in solid concrete, cannot be used for any other base material.



Type A



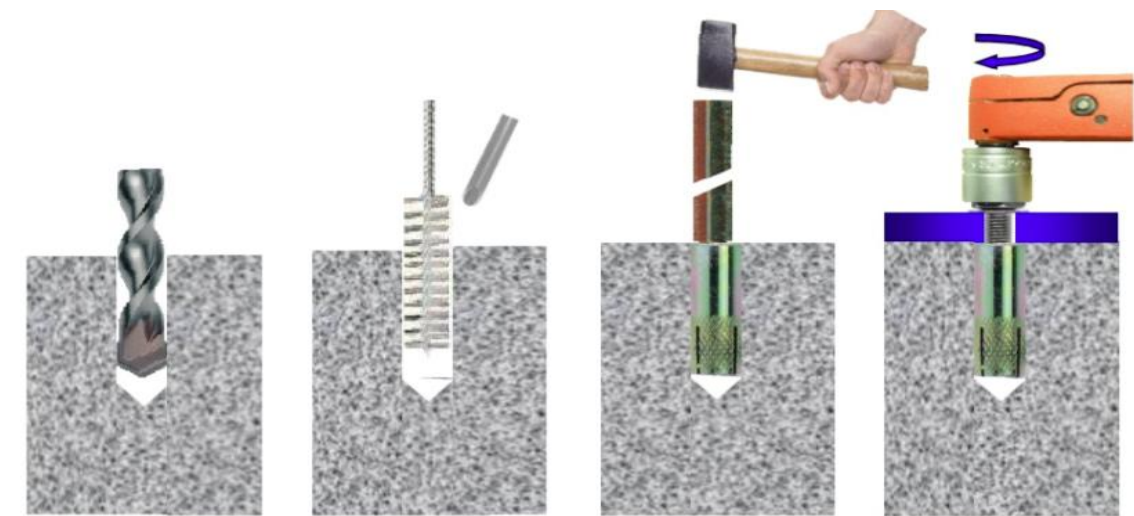
Type B



Type C



Type D



## How to Install?

1. Drill a same depth hole with the length of drop in anchor by the hammer drill with hammer and rotation mode, so to make the correct diameter in the concrete for drop in anchor in advance.
2. Clean out the hole with brush and blow to remove all the dust.
3. A setting tool needs be used when setting in concrete. Strike with a hammer on the setting tools after it is being insert in the drop in anchor, until lip of the setting tool meets the lip of the anchor.
4. Then insert the properly sized threaded rod or machine-threaded bolt into it.

# Chemical Anchor



Chemical Anchors are used to fix elements to hollow or solid materials. And they can be placed towards the edge of concrete substrates and through masonry blocks, concrete, stone, porous concrete, etc. This is achieved through the application of a resin inside a hole in which a stud is inserted to withstand high loads. The non-expanding nature of a chemically-held rod drastically reduces the chance of the surrounding concrete cracking.

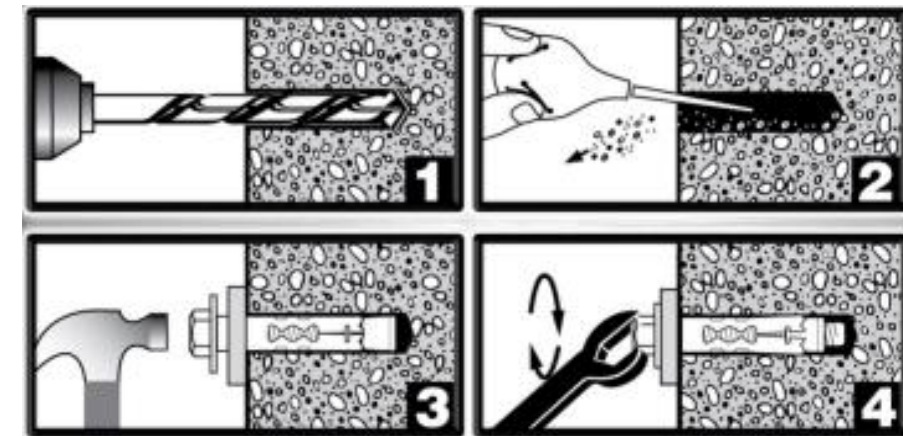


Stud Size	Max. Fast Thickness	Hole Size	Hole Depth (mm)
M8x110	16	10	80
M10x130	22	12	90
M12x160	30	14	110
M16X190	38	18	125
M20x260	70	25	170
M24x300	65	28	210
M30X380	70	35	280

# Sleeve Anchor



The one piece sleeve anchor is formed around anchor, assuring full expansion for dependable, superior holding power. Expanding clip will not fall off or twist in the hole. The anchor body will stand high impact loads. And with great tensile strength, it is unusually resistant to vibration loads.

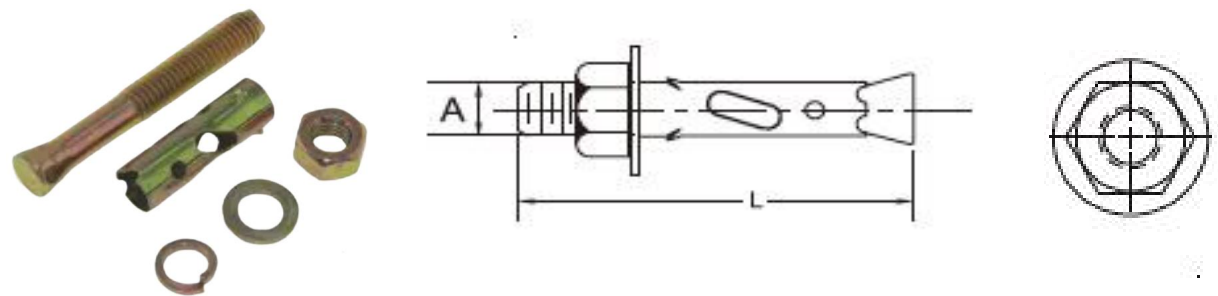


Size	Diameter	Length
M6	10	45
M8	12	57
M10	15	63
M12	18	78

# Shark Fin Anchor



Anti-skid Shark Fin Anchor is one type of fix anchor bolt. It is composed of one anti-skid shark fin pipe, one expansion bolt, one hex nut, one spring washer and one flat washer. It is suitable for all kinds of steel structures, cables, wires, brackets, doors, staircases, steel ladders, etc.. Bearing heavy vibration load of building components, it has seismic resistance and durability and very reliable post-expansion function.

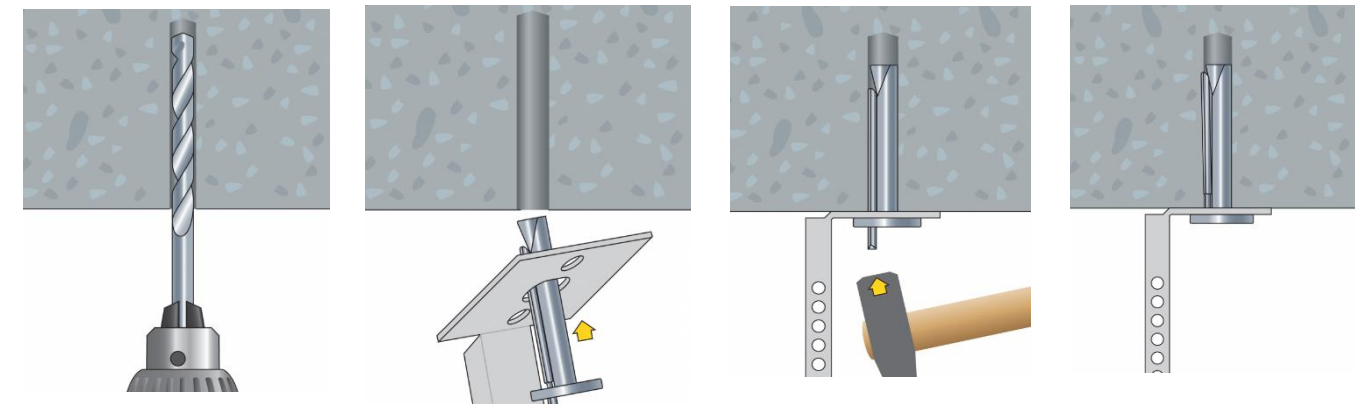


Stud Size	Sleeve Length	Casing Thickness	Hole Depth (mm)
1/4"x50	50	32	8
5/16"x65	65	37	10
3/8"x75	70	40	12
1/2"x95	95	50	16
5/8"x110	110	60	20

# Ceiling Anchor



Ceiling anchors are easy to install without special tools. The anchors perform very well for materials such as concrete, solid brickwork and stone. Ideal for use with ceiling brackets on suspended ceilings.

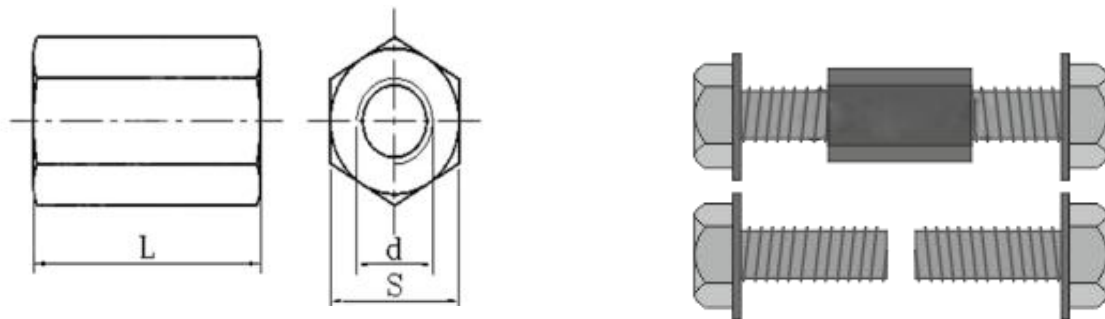


SIZE	MATERIAL
M6X40, M6X60	CARBON STEEL
FINISHING	GRADE
WZP / YZP	4.8

# Hex Coupling Nut



Hex Coupling Nut is designed to help extend the lengths of fasteners. It also can be installed on threaded objects including hex screws, or for balustrading and structural applications. It is widely used in the assembly of electromechanical and light industrial products, such as in the field of aviation, railways, refrigeration, instruments, elevators, switches, furniture and decoration.



SIZE	D	S	L
M5	5	8	10-20
M6	6	10	20-30
M8	8	13	24-40
M10	10	17	22-45
M12	12	19	30-50
M16	16	24	50

